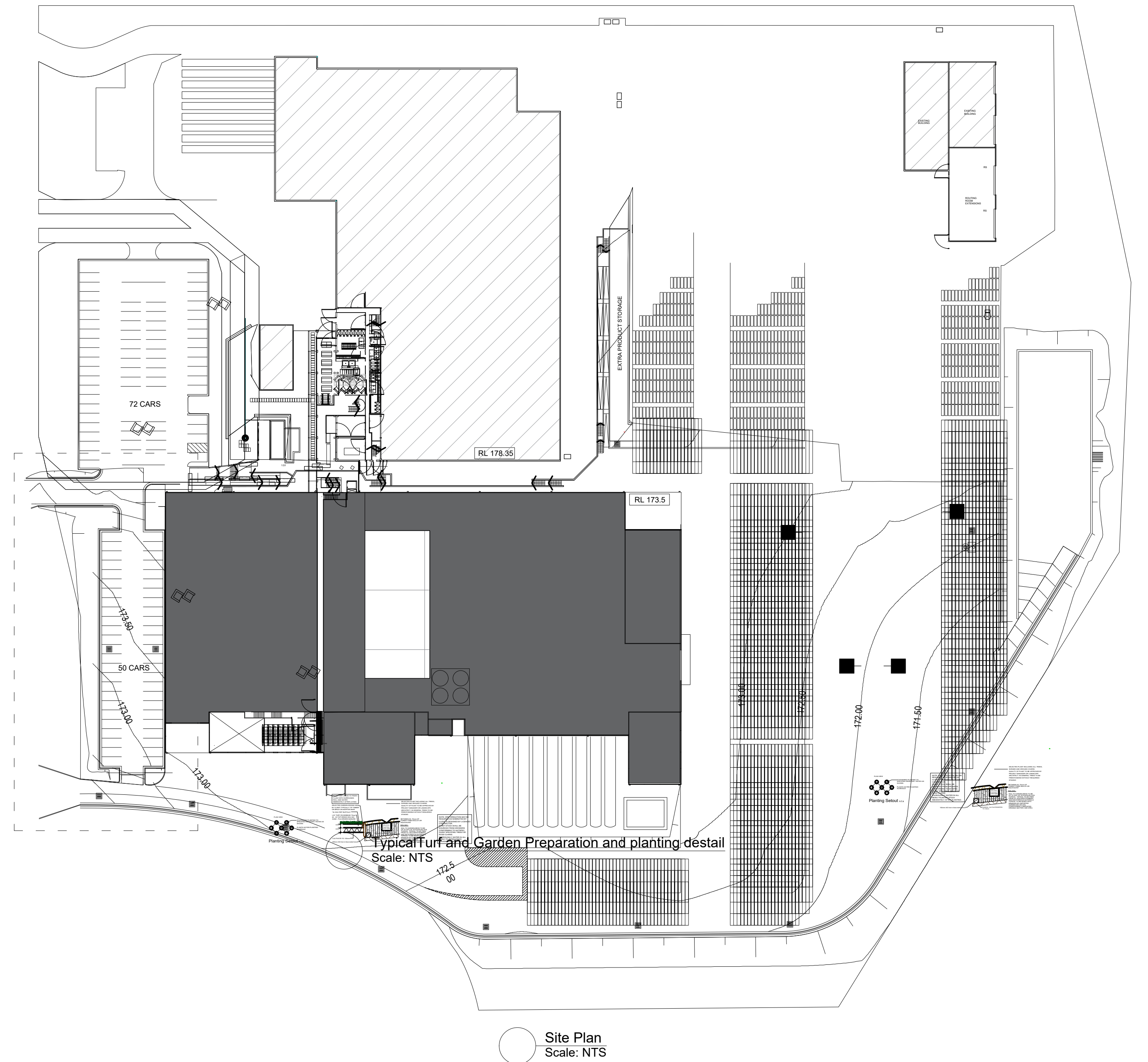
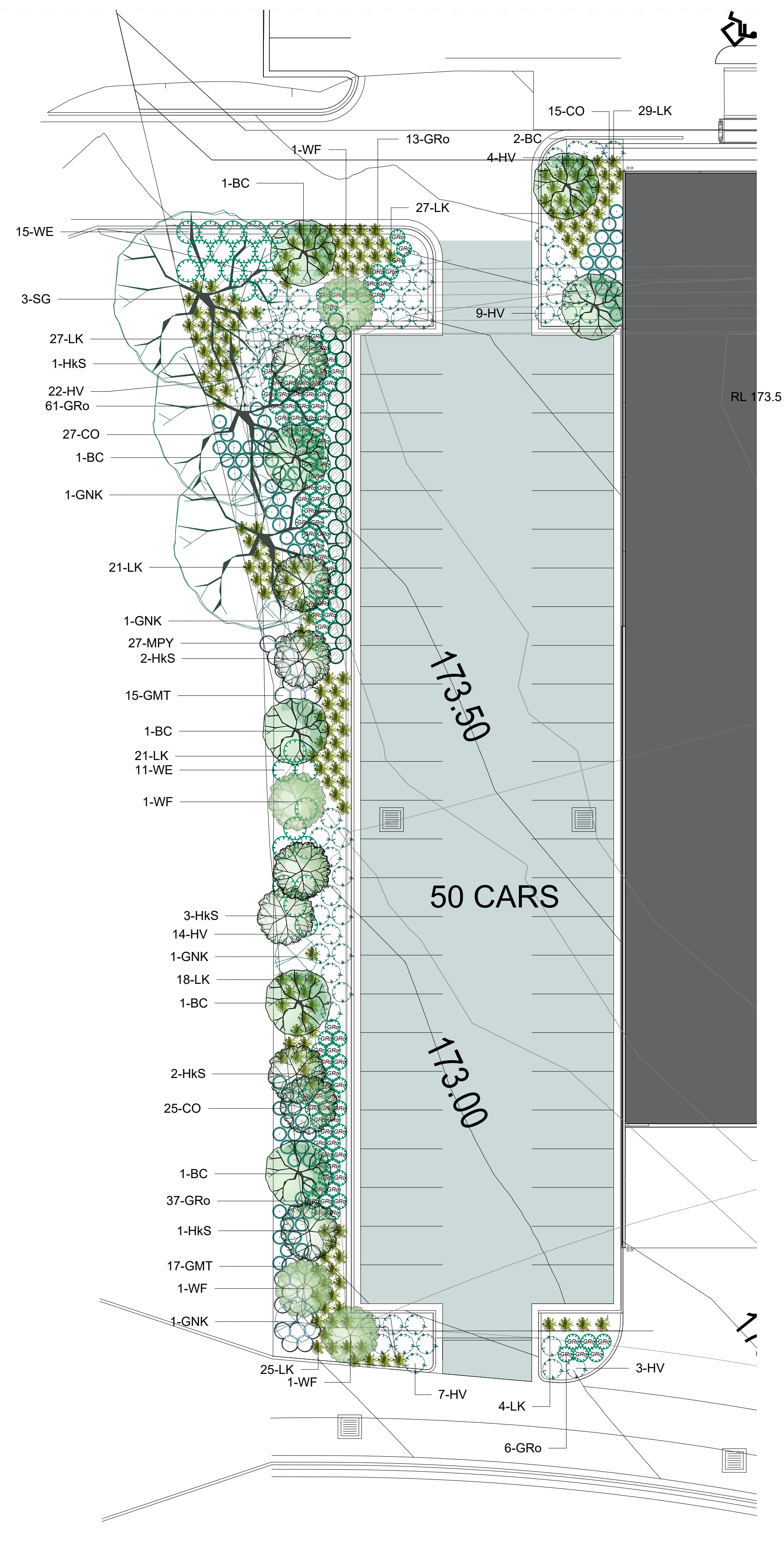


 Concrete Hardstand

ID	Botanical Name	Common Name	Pot Size	Mature Height	Mature Spread	Qty
<b>Trees</b>						
BC	Buckinghamia celsissima	Ivory Curl Tree	45L	6 - 8m	3.5 - 6m	7
HkS	Hakea salicifolia	Willow Leaved Hakea	25L	4-8m	6m	9
SG	Syncarpia glomulifera	Turpentine	45L	25m	12m	3
WF	Waterhousia floribunda	Weeping Lilly Pilly	45L	5 - 10m	3.5 - 6m	4
<b>Shrubs</b>						
CO	Correa alba	Correa alba	140mm	1m	1m	67
GNK	Grevillea 'Ned Kelly'	Grevillea	200mm	1.5 - 3m	1.2 - 2.0m	4
GMT	Grevillea 'Mt Tamboritha'	Woolly Grevillea	140mm	0.3 - 0.45m	1.2 - 2.0m	32
GRO	Grevillea rosmarinifolia	Rosemary Grevillea	140mm	1 - 1.5m	1m	117
WE	Westringia fruticosa	Coastal Rosemary	140mm	1.5m	1.5m	26
<b>Ground Covers</b>						
MPY	Myoporum parvifolium 'Yareena'	Creeping Boobialla	140mm	0.6m	1m	27
<b>Grasses</b>						
LK	Lomandra longifolia 'Katrinus'	Katrinus Mat-Rush	140mm	0.75 - 0.9m	0.9 - 1.2m	172
<b>Climbers</b>						
HV	Hardenbergia violacea	False Sarsaparilla	140mm	0.3 - 0.45m	2 - 3m	59



### 3 GENERAL MINOR AMENDMENTS

Client **CSR HEBEL**

Project

Proposed Industrial Development  
WISEMANS FERRY ROAD  
SOMERSBY

Landscape Plan- Ground Floor

APRIL 2016

1:200 @ A1

Drawn by  
**Lukasz Duda**

Lubov Pan  
BLARCH (UNSW)

---

FORUM \ URL

FROM

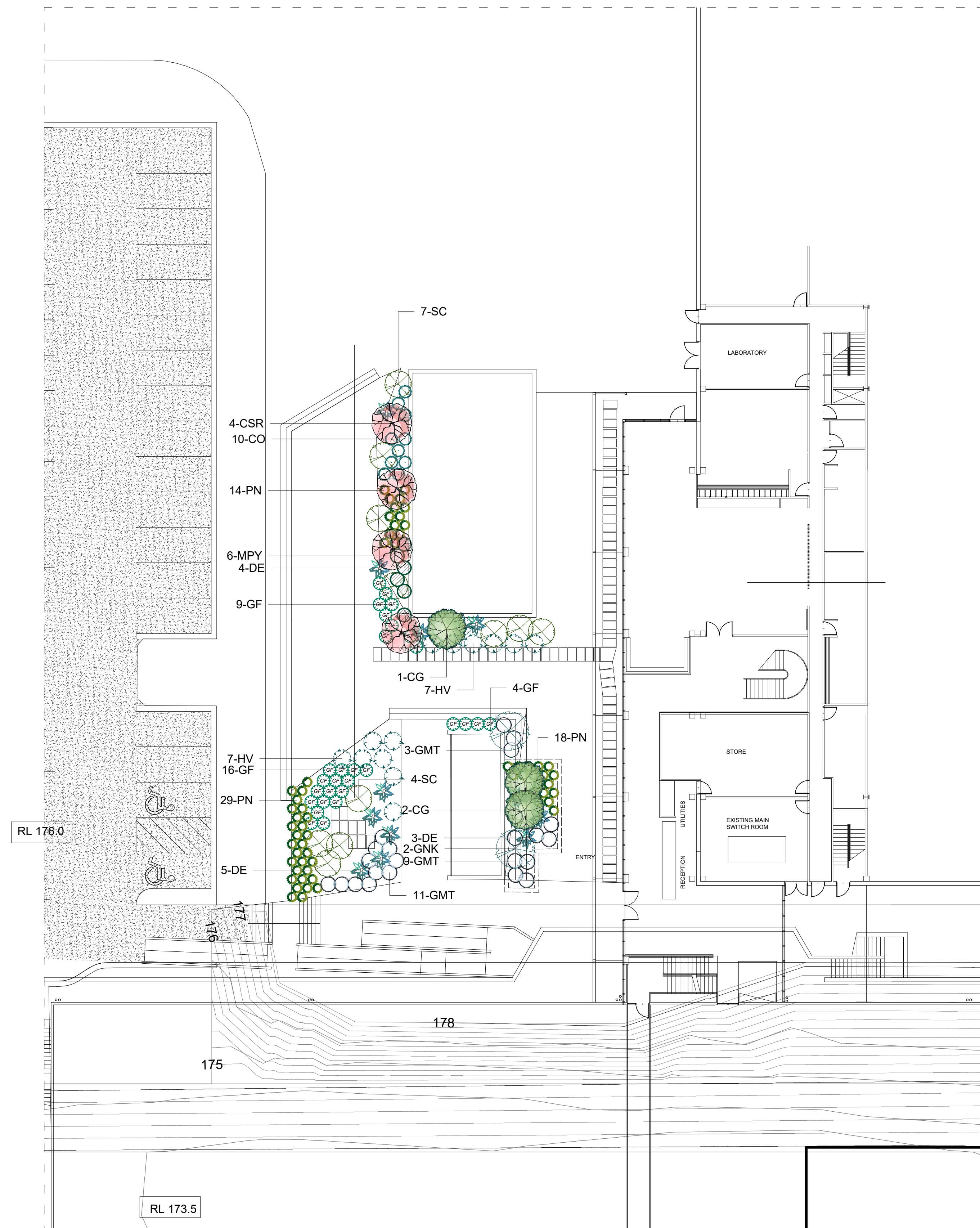
PO BOX 261 | 67 McMICHA


T: 02 4961 4980 | F: 02 4969  
A.B.N.

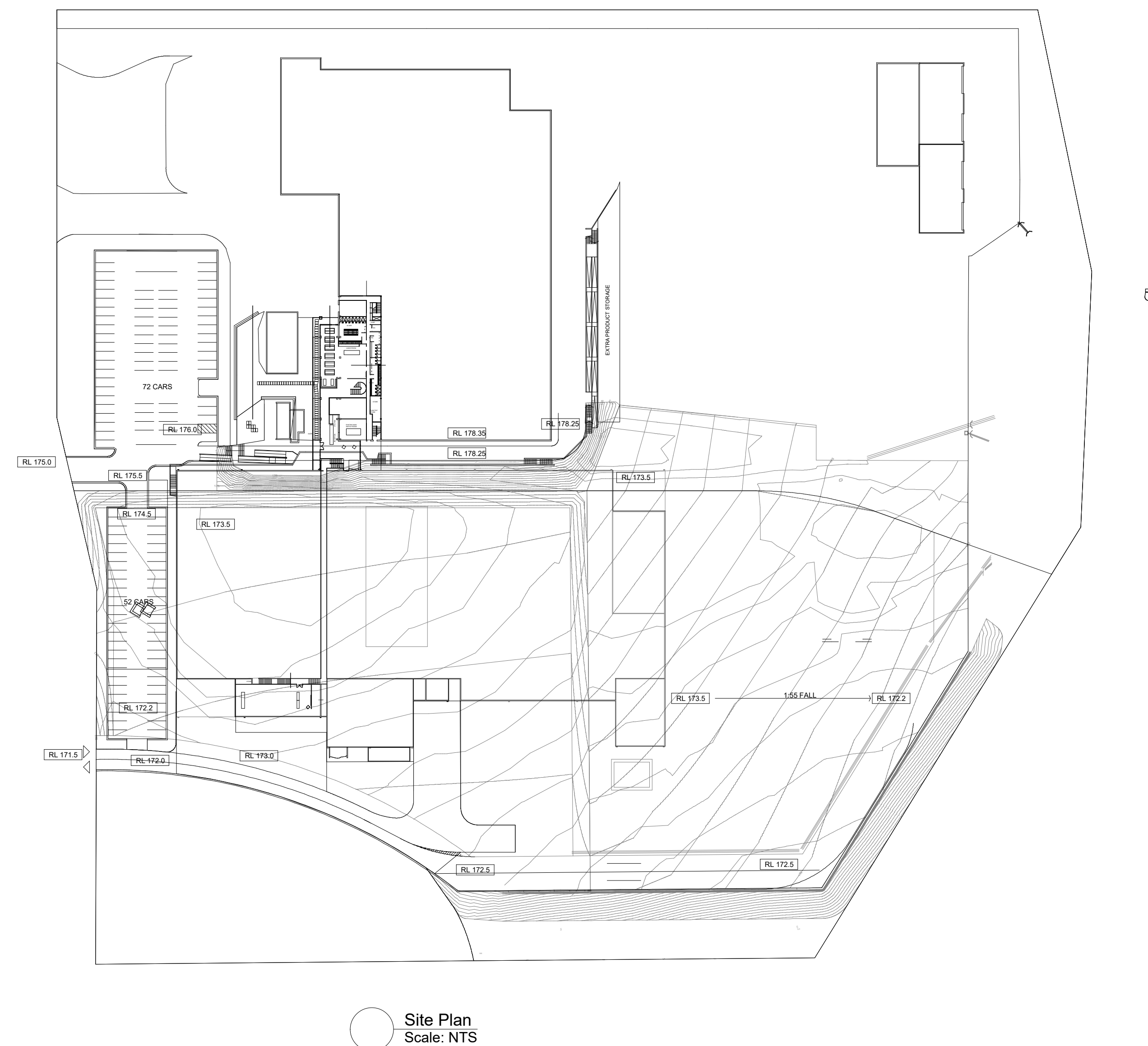
---



Legend

 Concrete Hardstand/ Carpark

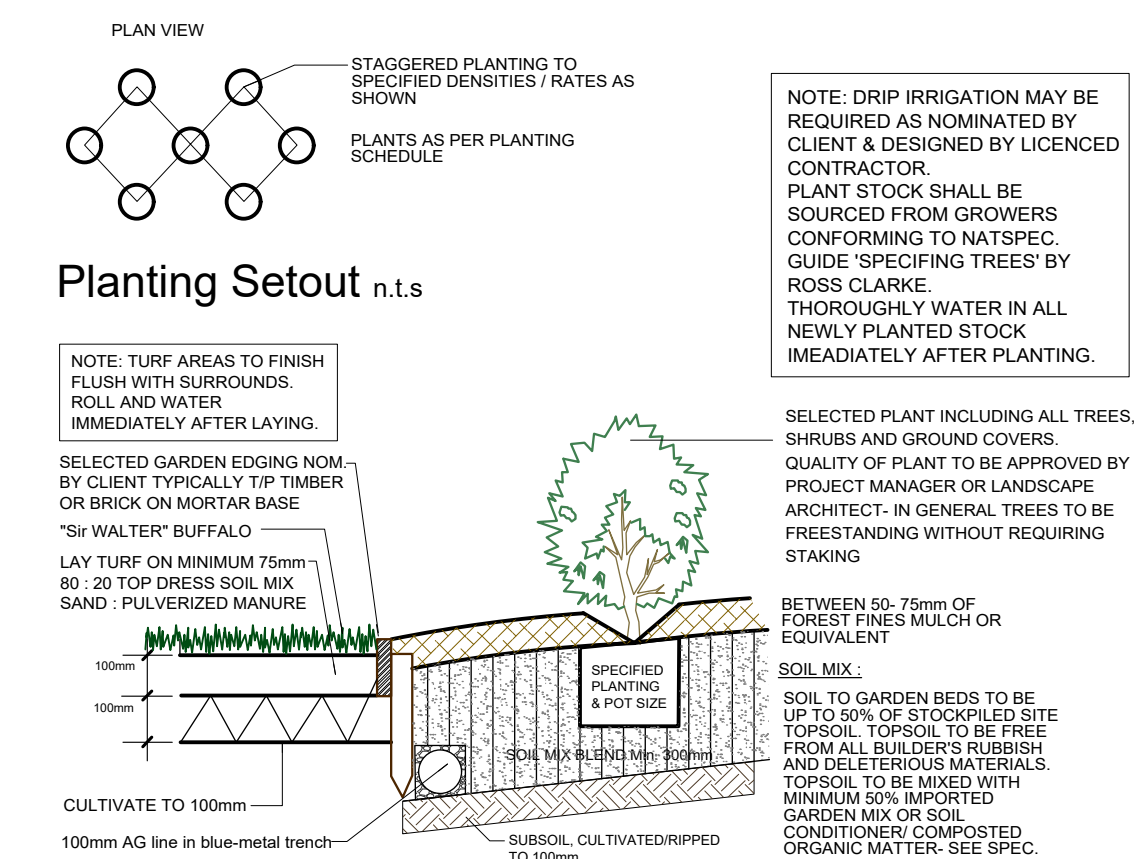
 Landscape Plan  
Scale: 1:200



 Site Plan  
Scale: NTS

## Plant List

ID	Botanical Name	Common Name	Pot Size	Mature Height	Mature Spread	Qty
<b>Trees</b>						
CG	Ceratopetalum gummiferum	NSW Christmas Bush	45L	1.5 - 3m	0.9 - 1.2m	3
CSR	Corymbia ficifolia 'Summer Red'	Summer Red	75L	4-5m	3m	4
<b>Shrubs</b>						
GNK	Grevillea 'Ned Kelly'	Grevillea	200mm	1.5 - 3m	1.2 - 2.0m	2
SC	Syzygium 'Cascade'	Cascade	200mm	2 - 3m	2m	11
<b>Ground Covers</b>						
<b>Grasses</b>						
<b>Climbers</b>						



○ TypicalTurf and Garden Preparation and planting destail  
Scale: NTS



